

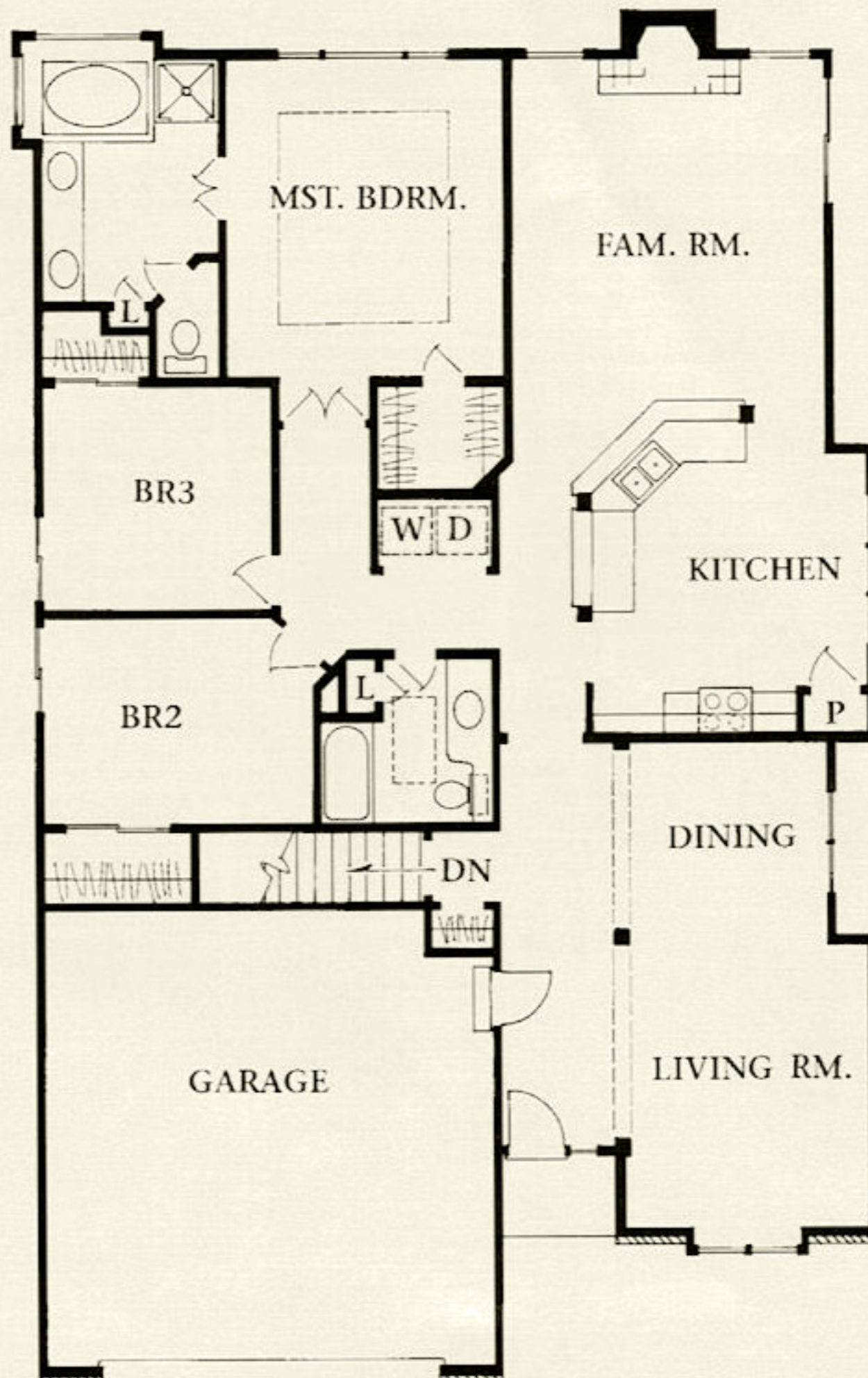
---

## Braddock

---

3-Bedroom, Ranch • 1,853 Sq. Ft. • Model at Banyan Hills

*A treat for the eyes, this is an exciting innovation in a 3-bedroom ranch. Featuring a formal living room with adjoining dining room, separate "great room," spacious master suite, columns and smooth ceilings throughout. Unique, affordable and very, very livable!*





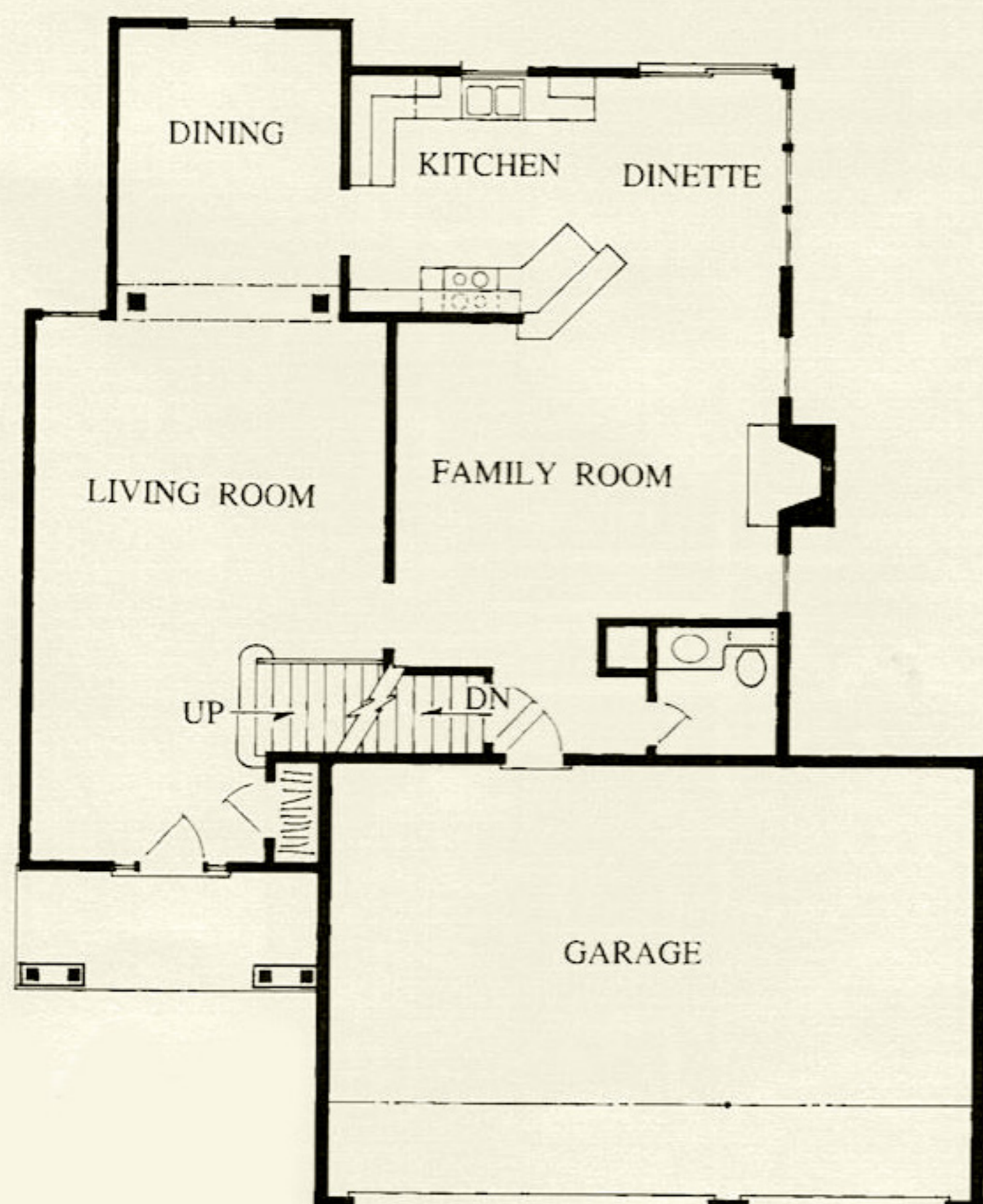


## Concordia

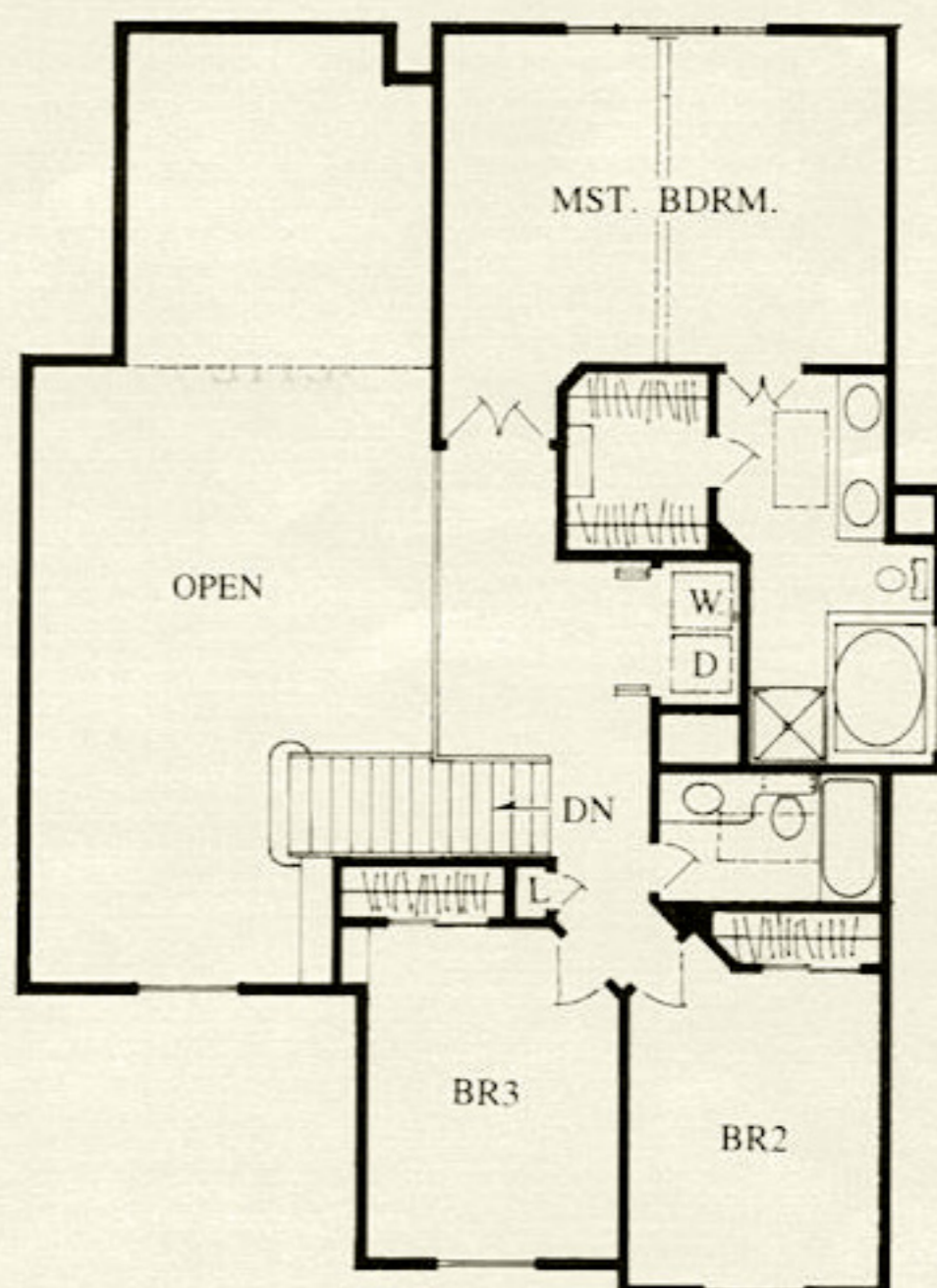
3-Bedroom, 2-Story • 2,064 Sq. Ft. • Model at Sunrise

*Everything about this home is dramatic, from its expansive, 2-story-high living room, to the columns framing the dining room. With a standard 3-car garage, bedroom level laundry and large master suite complete with whirlpool bath, this home is an extraordinary value.*

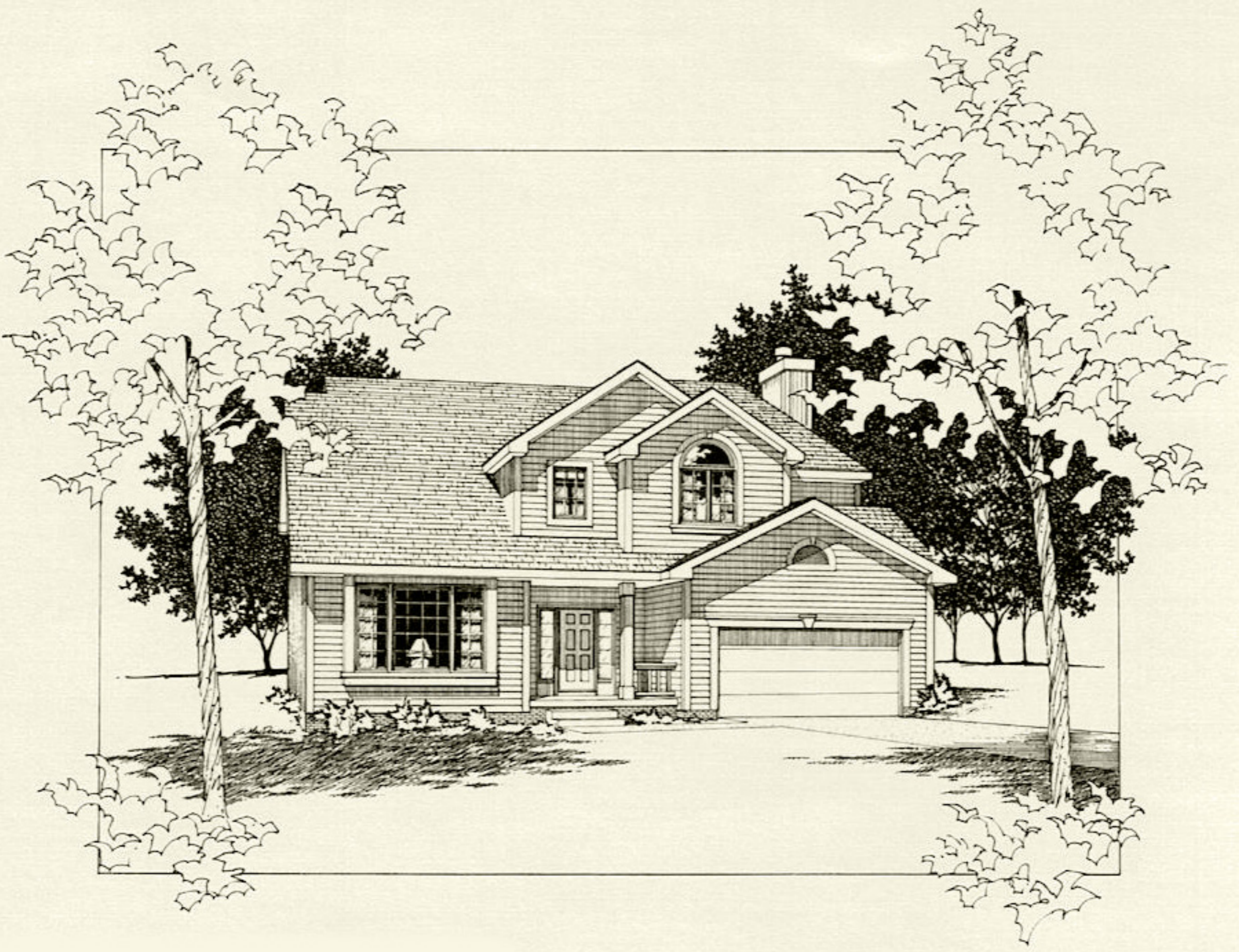
Level 1



Level 2



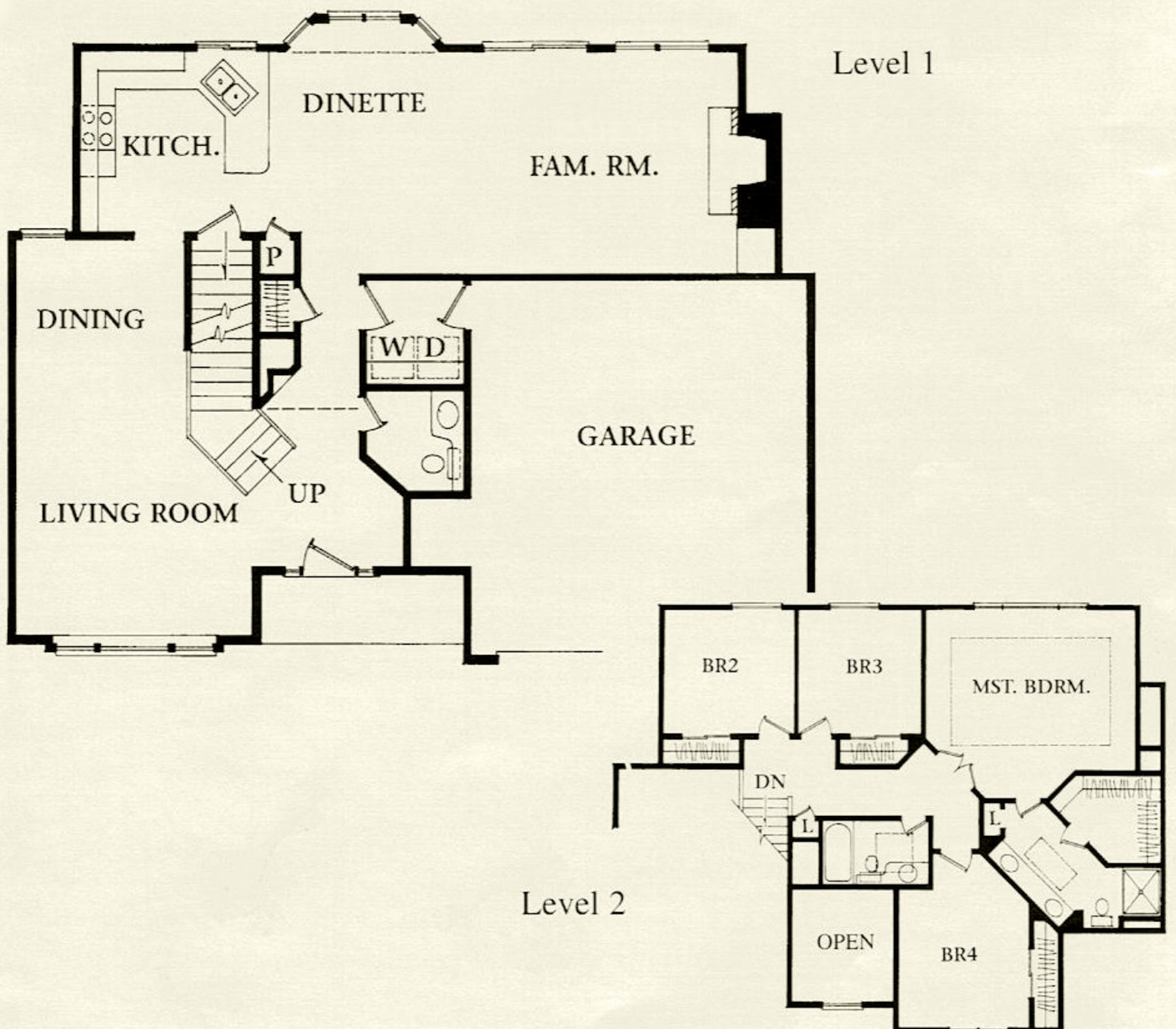




## Danville

4-Bedroom, 2-Story • 2,003 Sq. Ft. • Model at Elk Creek Crossing

*Dramatic 17-foot entry and gracious center staircase are just some of the features that make this a home designed for the way you live today. This elegant, affordable 2-story holds many surprises, including main floor laundry and choice of 4th bedroom or office.*



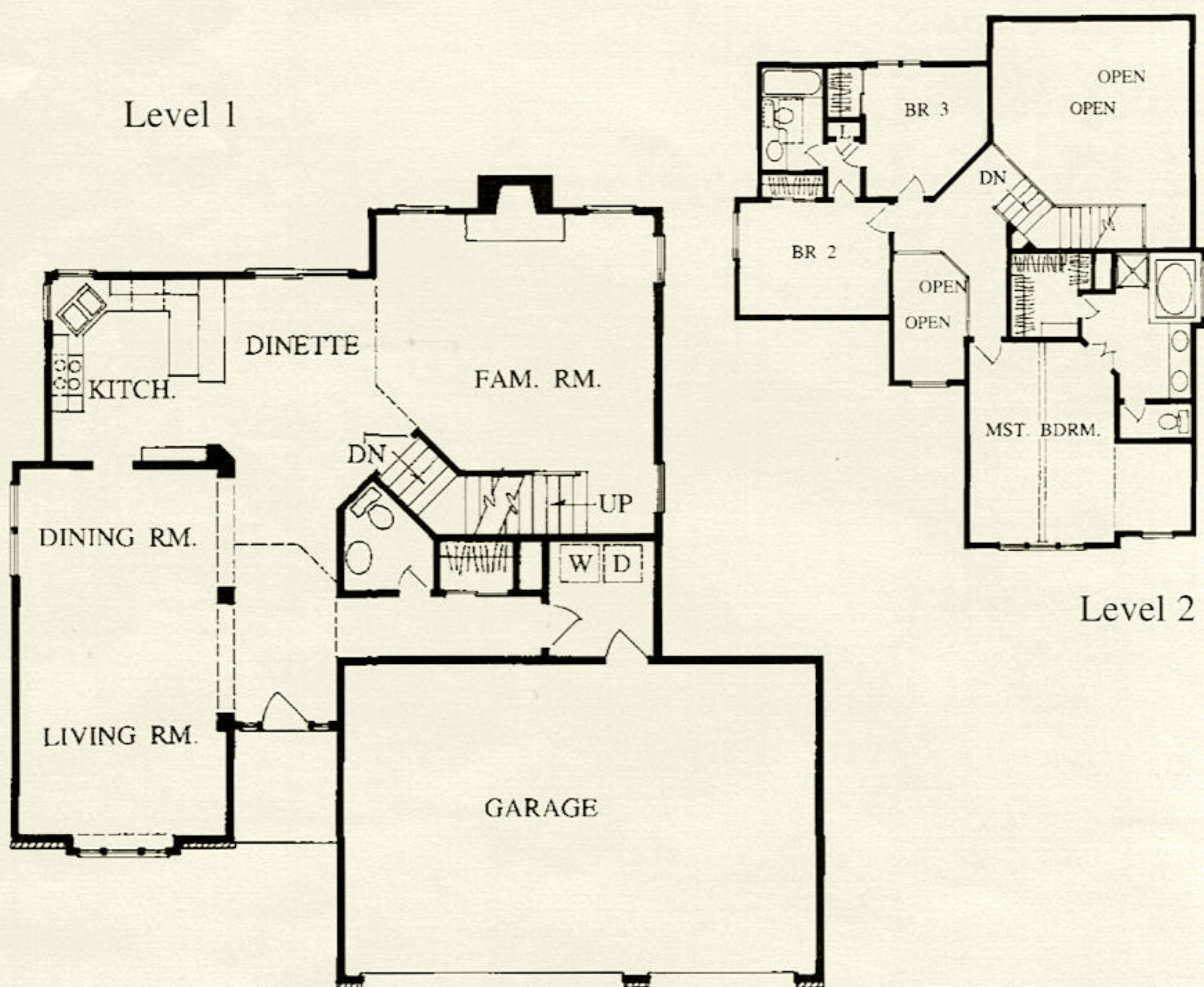




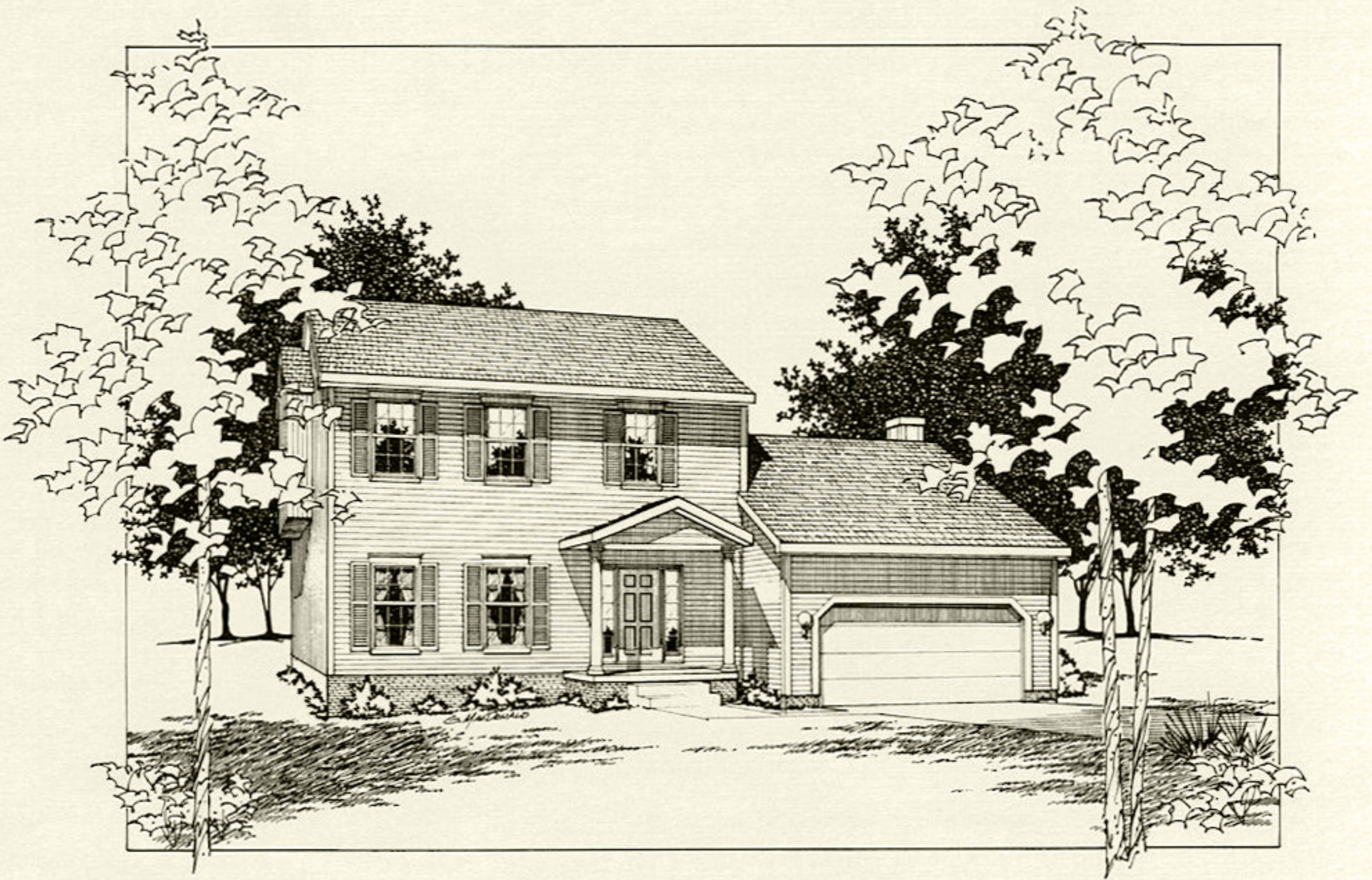
## Hensley

3-Bedroom, 2-Story • 2,164 Sq. Ft. • Model at Elk Creek Crossing

*This home takes full advantage of an exceptional 2-story design with a unique rear staircase. From its dramatic, wide-open entry to the 17-foot high family room in the rear, there's a surprise around every corner. The standard 3-car garage is just the beginning!*



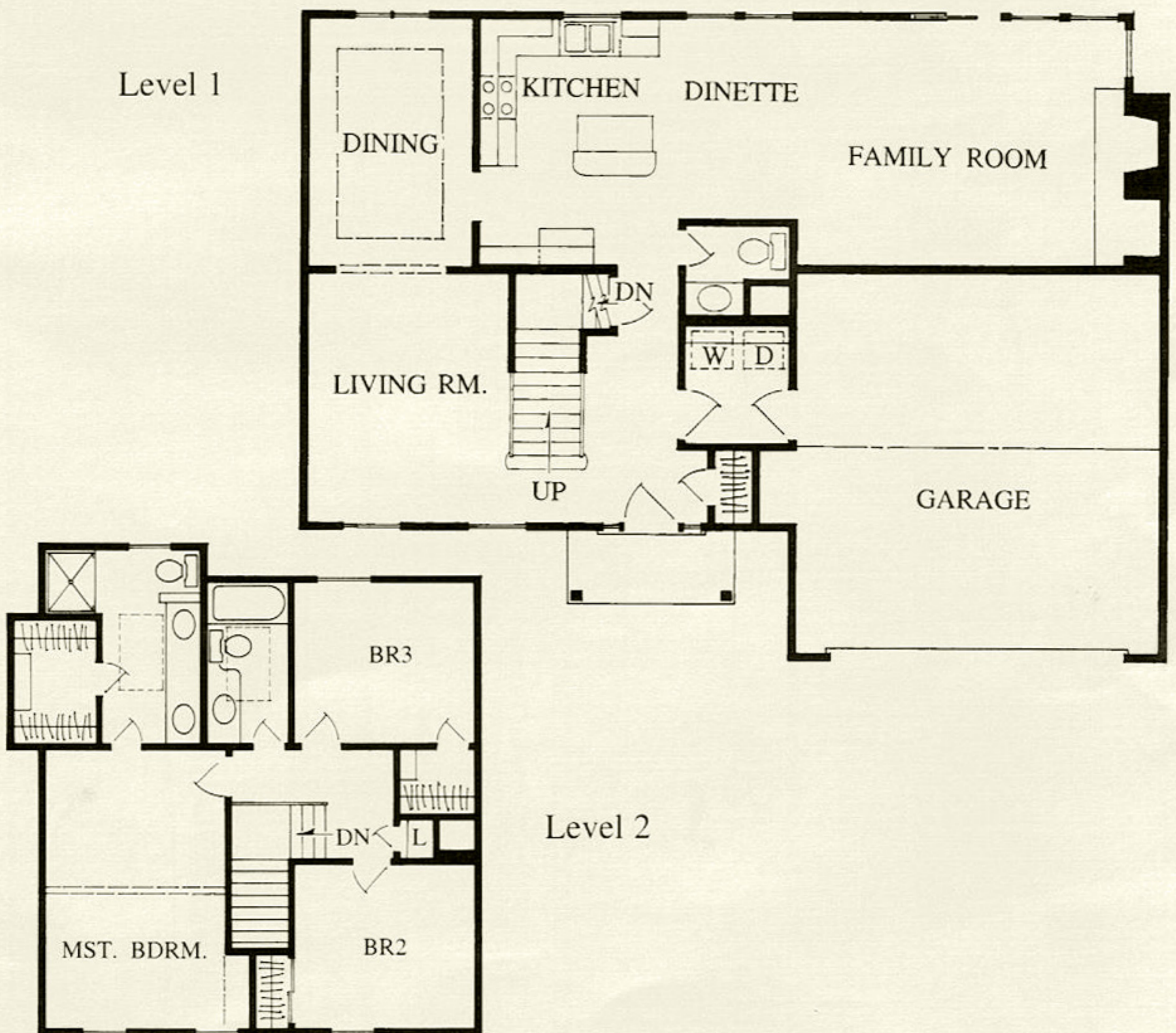




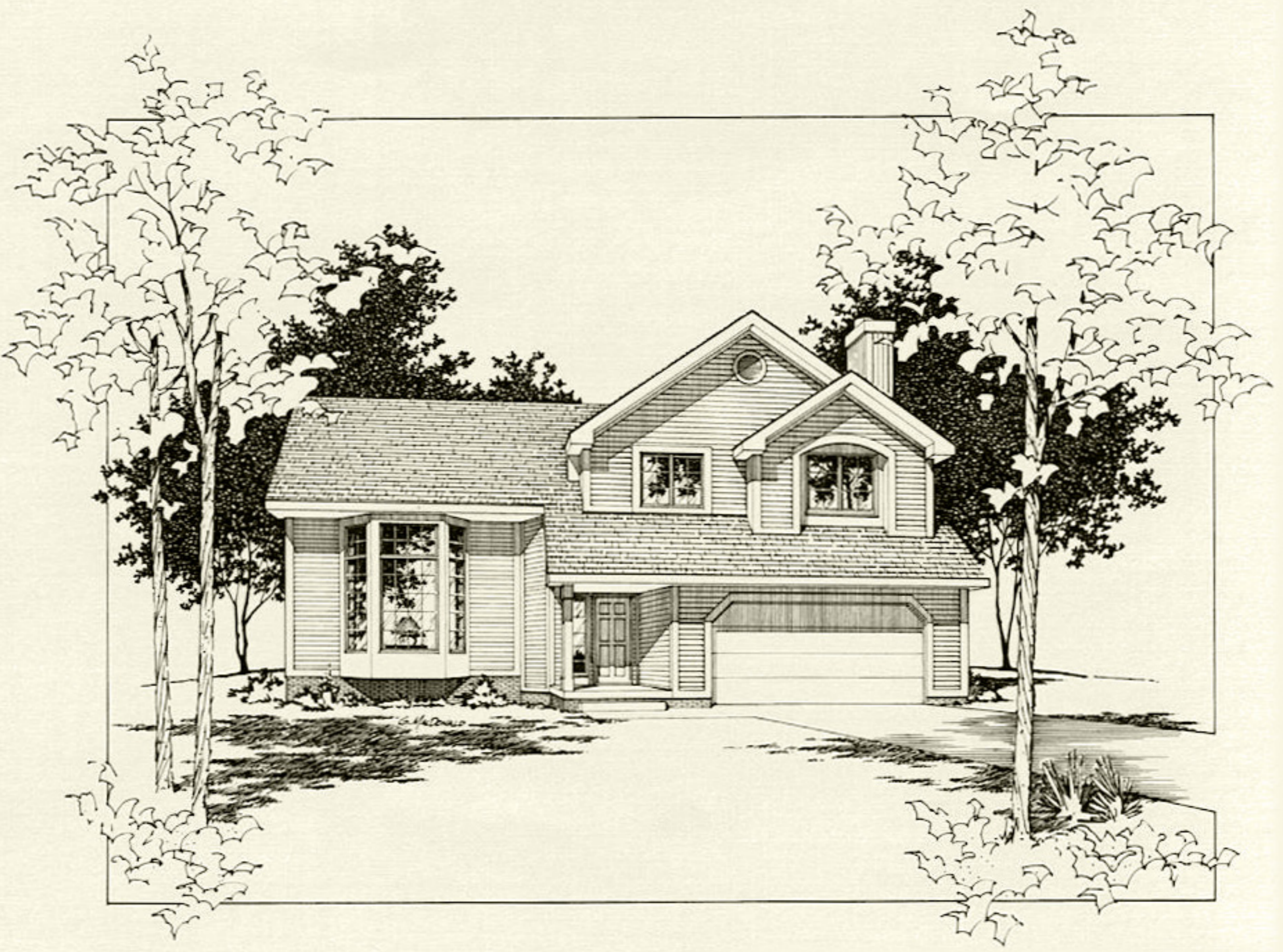
## Luxeford

3-Bedroom, 2-Story • 1,797 Sq. Ft. • Model at Sunrise

*Bright, open and inviting central floor plan leads to kitchen and family room with 9-foot ceiling and an exciting designer window wall. All this plus a main floor laundry and lots of liveable space makes this home perfect for today's busy family.*



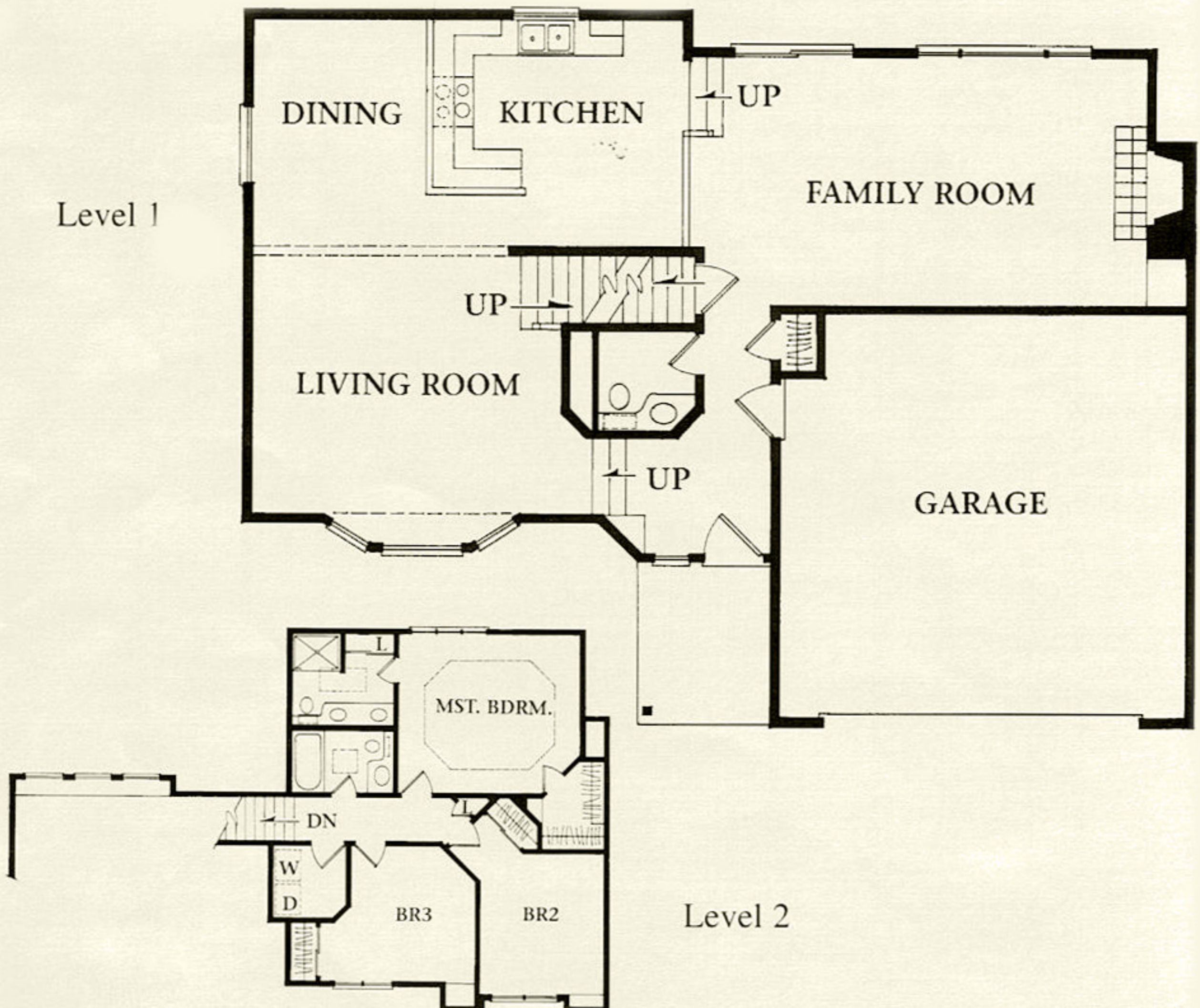




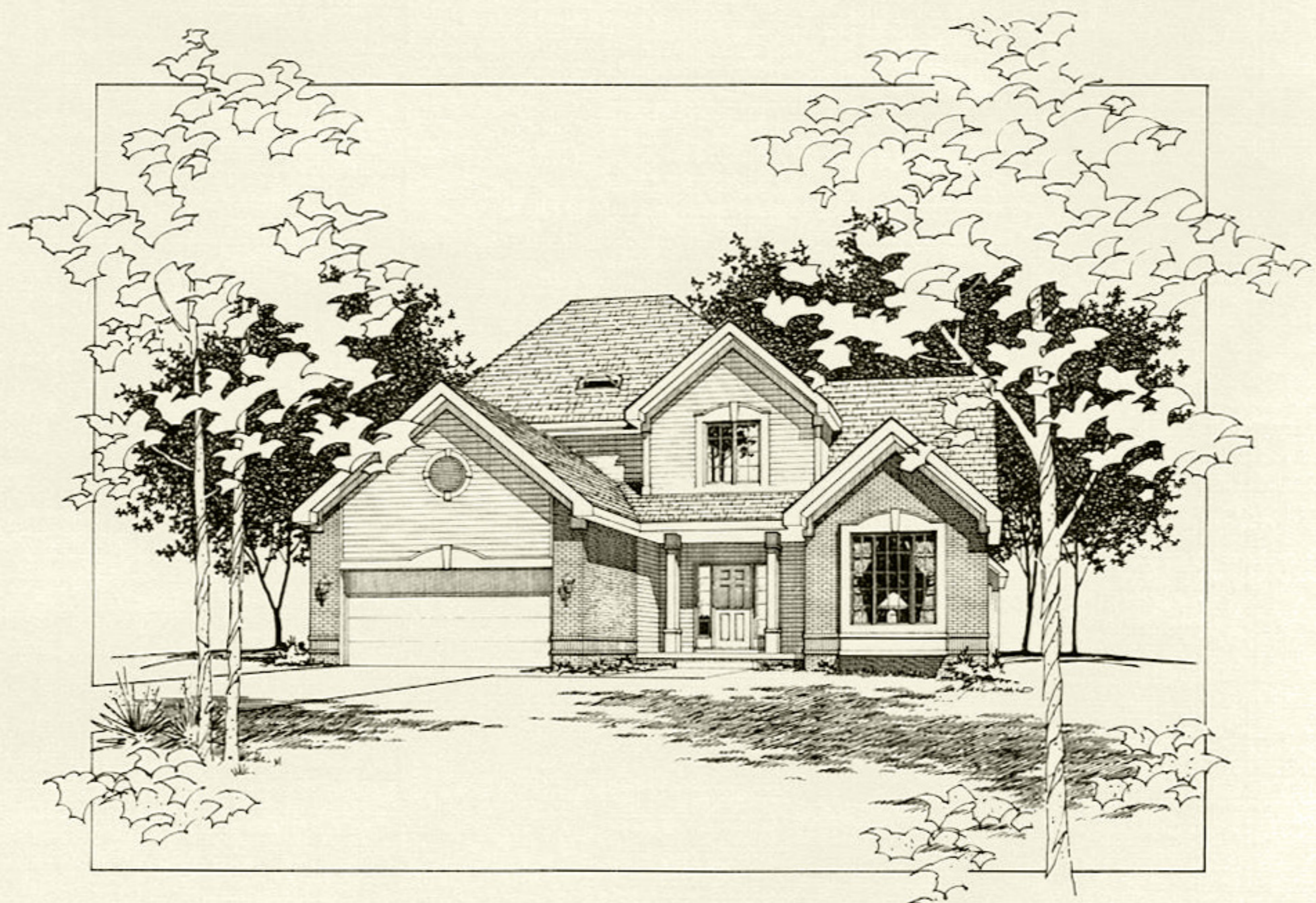
## Manchester

3-Bedroom, Tri-level • 1,724 Sq. Ft. • Model at Elk Creek Crossing

*Cathedral ceilings, a second-floor laundry, spacious family room and three bath locations are just some of the many innovative features designed into this exceptional home. More value per square foot than any other home in its price range.*



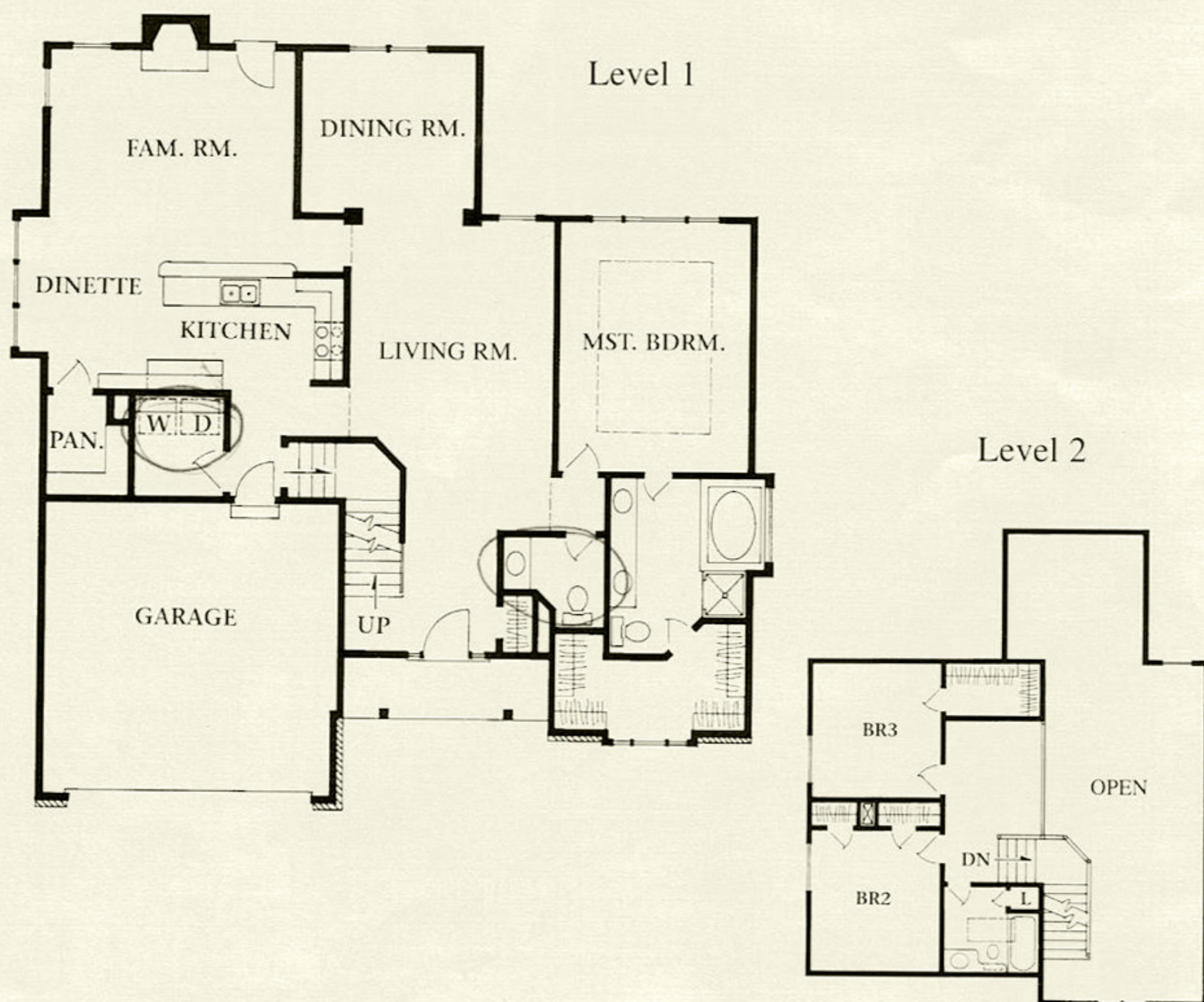




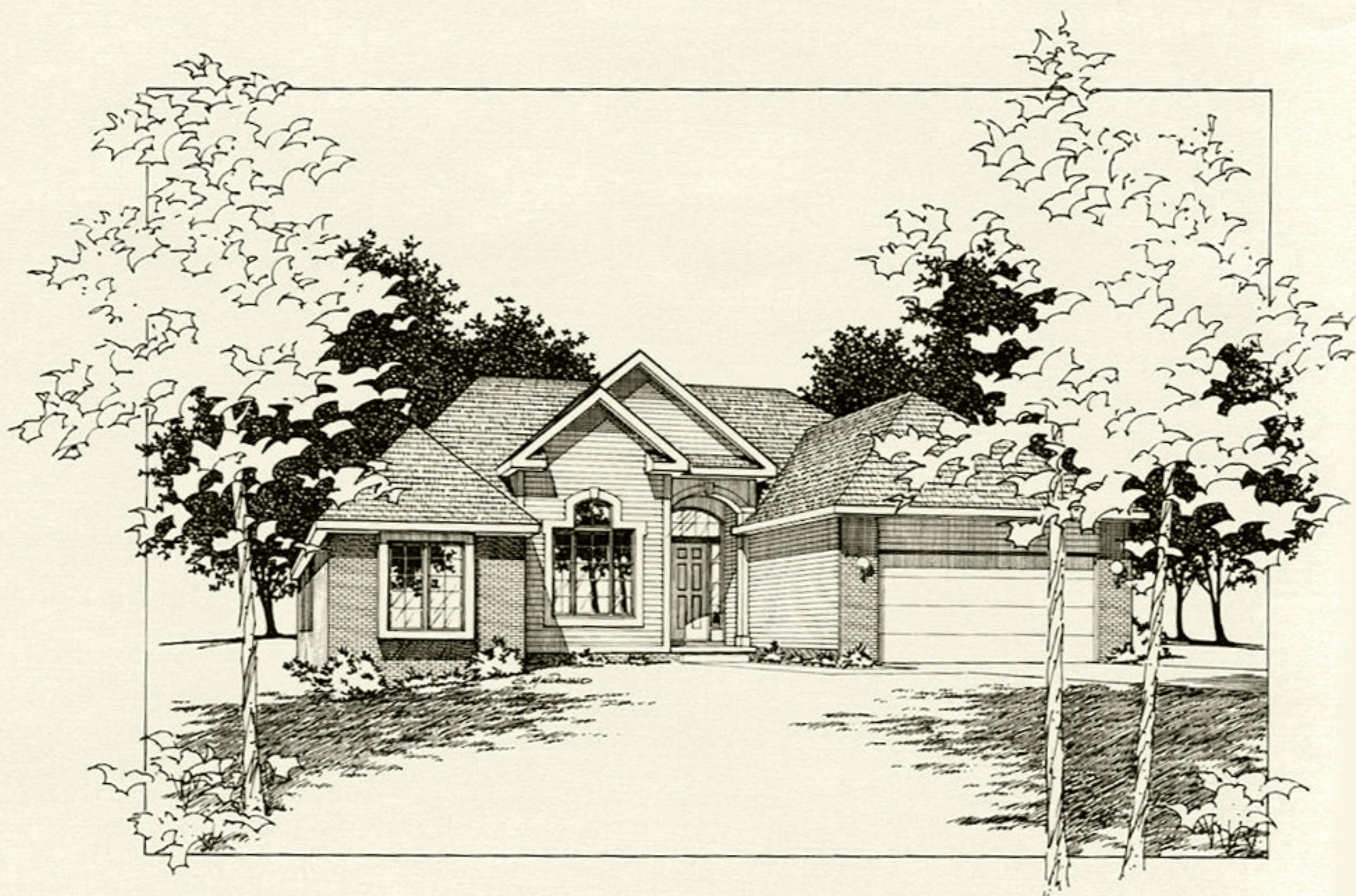
## Quincy

3-Bedroom, 1-1/2-Story • 2,122 Sq. Ft. • Model at Banyan Hills

*A truly unique “story and a half.” The dramatic 2-story entry and living room accent the formal dining room. A huge walk-in pantry, upstairs loft and convenient main floor master bedroom with walk-in closet are just some of this home’s many surprises.*







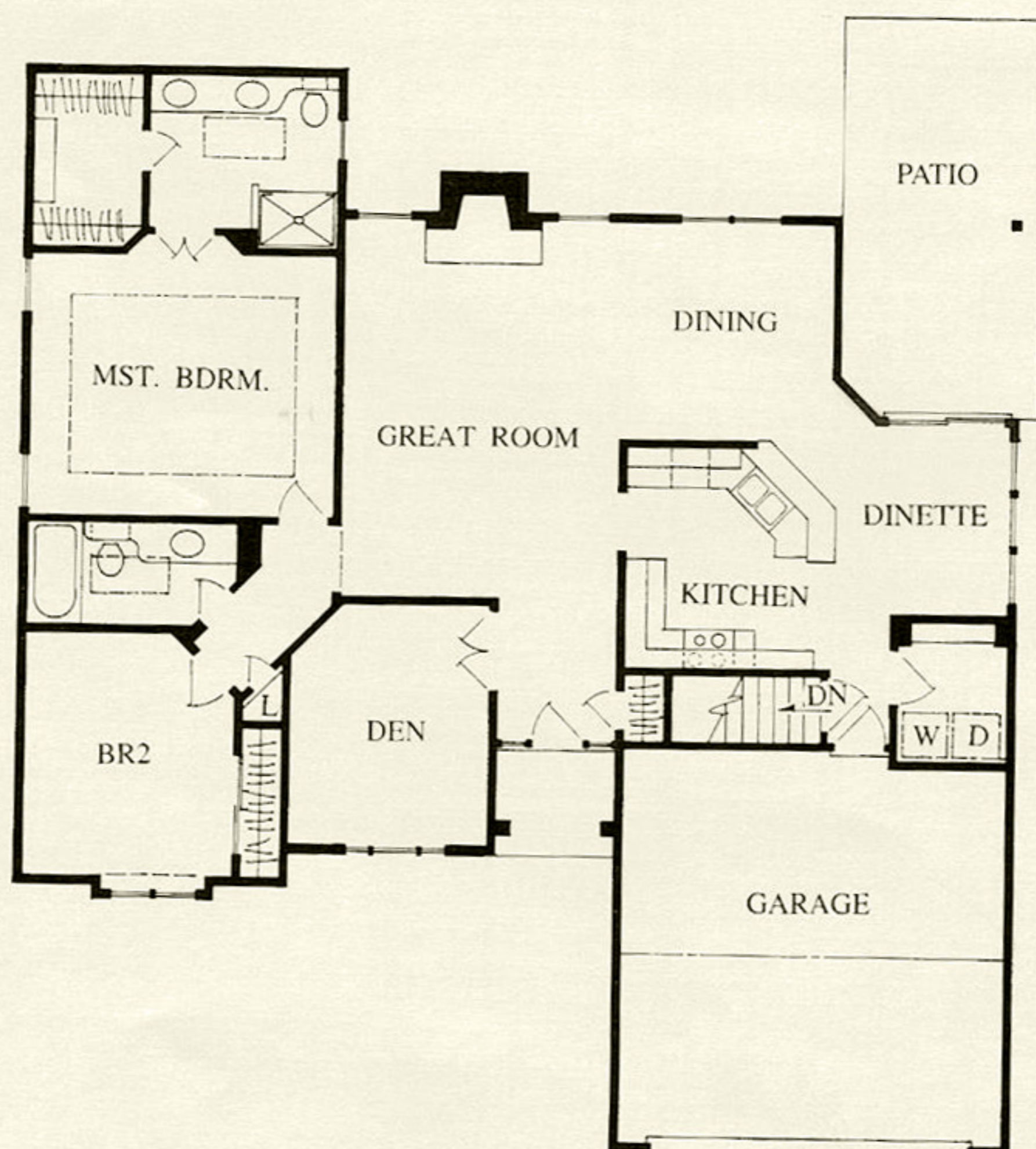
---

## Roswell

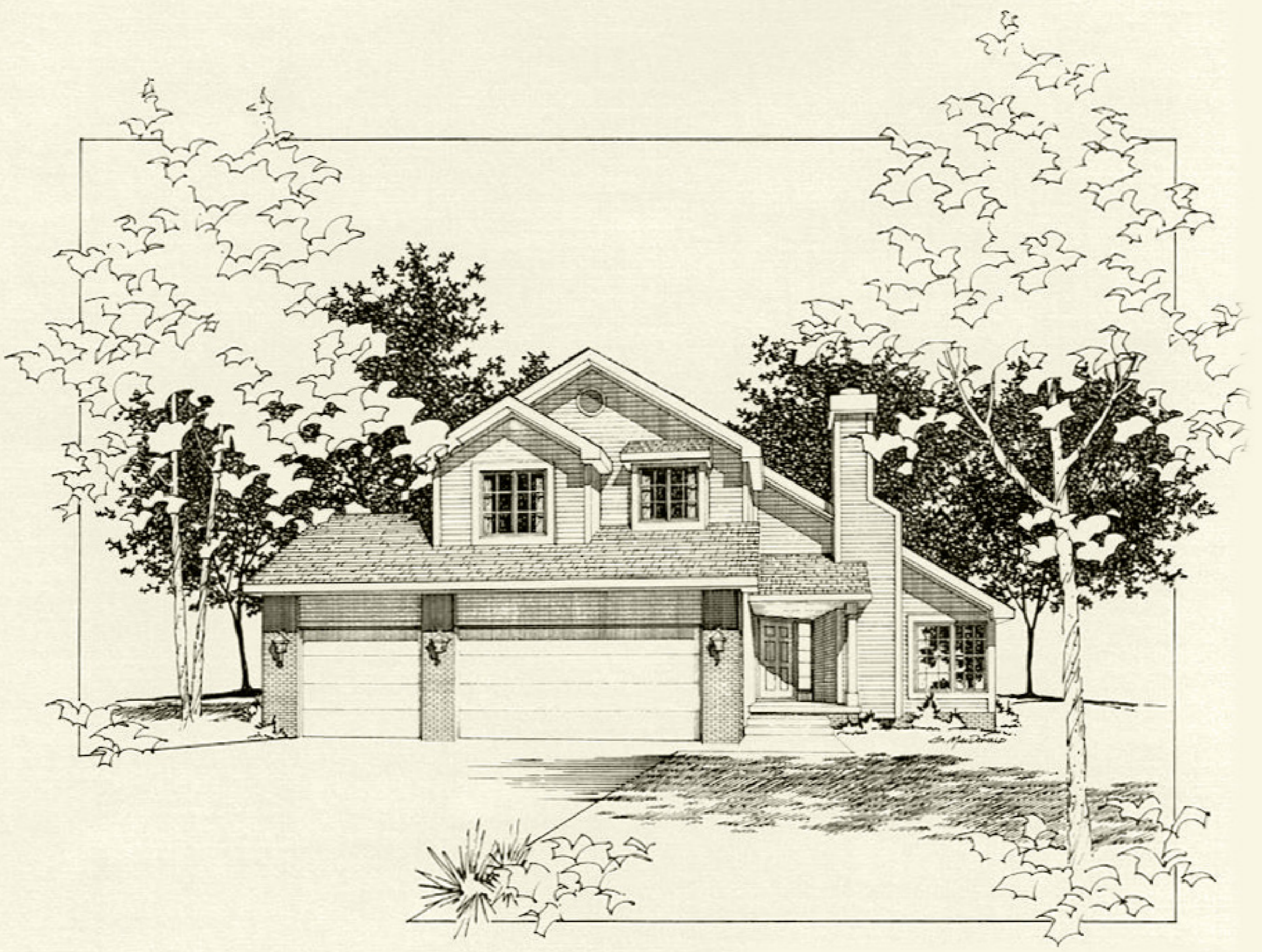
---

3-Bedroom, Ranch • 1,518 Sq. Ft. • Model at Sunrise

*Outstanding on the outside, convenient and very livable on the inside. No competitively priced ranch comes close. A generous great room, huge master suite and choice of 3rd bedroom or den are just the beginning. Ten-foot, smooth ceilings in the main living area and covered patio are wonderful extras at no extra cost!*





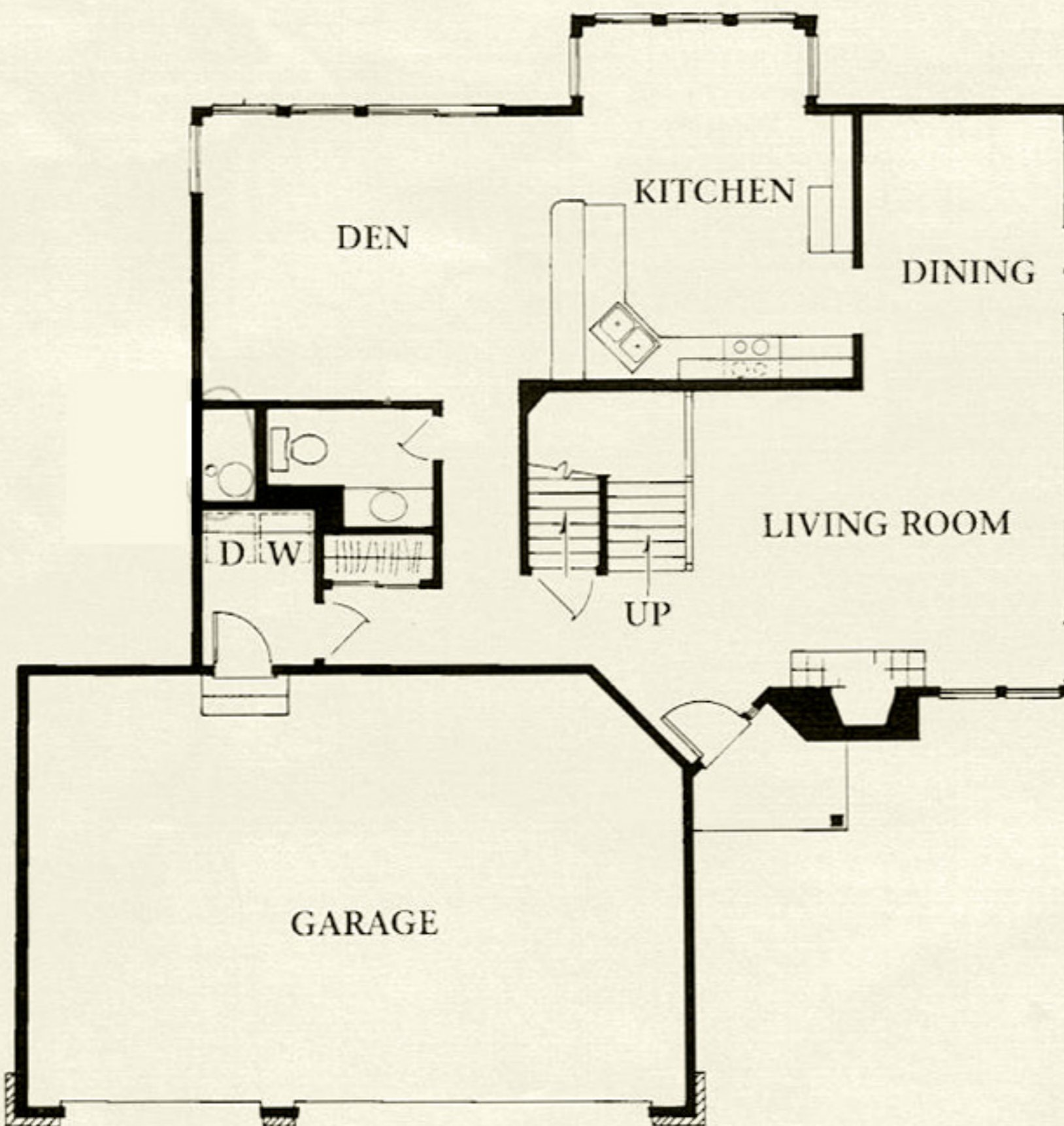


## Ventura

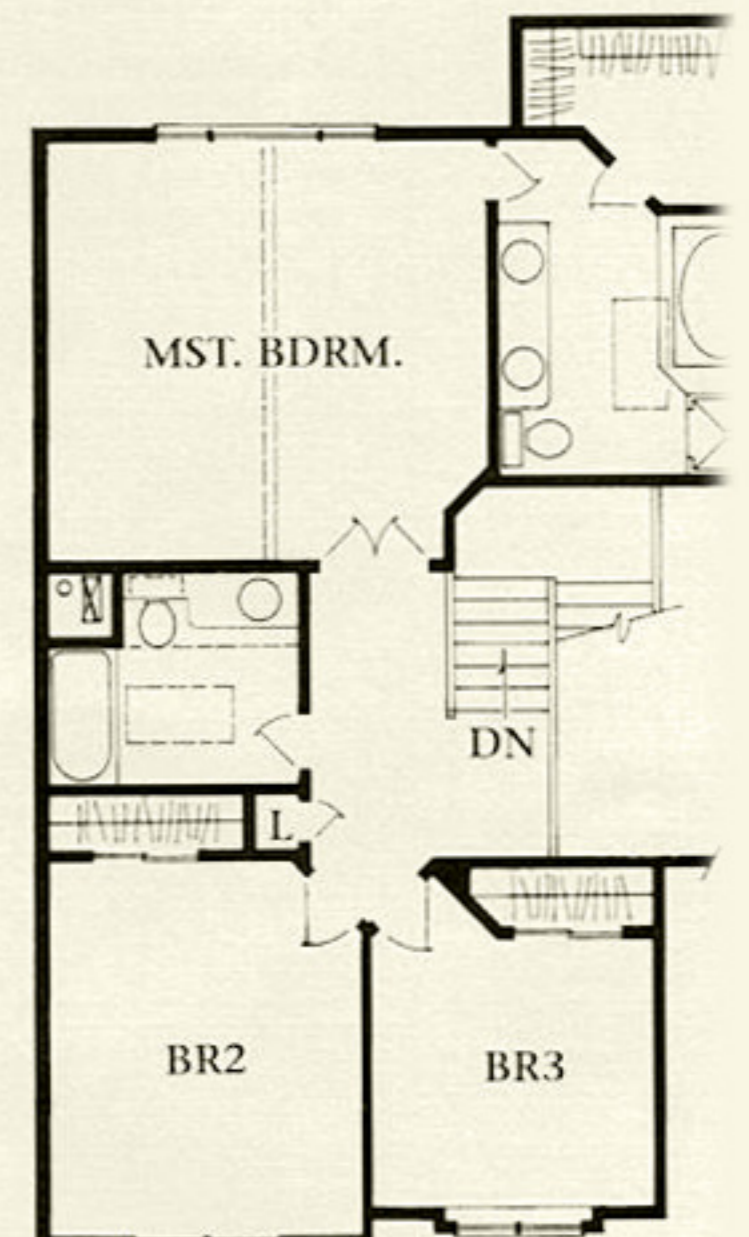
3-Bedroom, 2-Story • 2,049 Sq. Ft. • Model at Banyan Hills

*A wonderful and inviting home, the full 3-car garage begins a long list of no-extra-cost features that includes nine-foot ceilings, both a formal living room and dining room and informal family area. A designer window wall opens the kitchen to a wonderful world of outdoor living.*

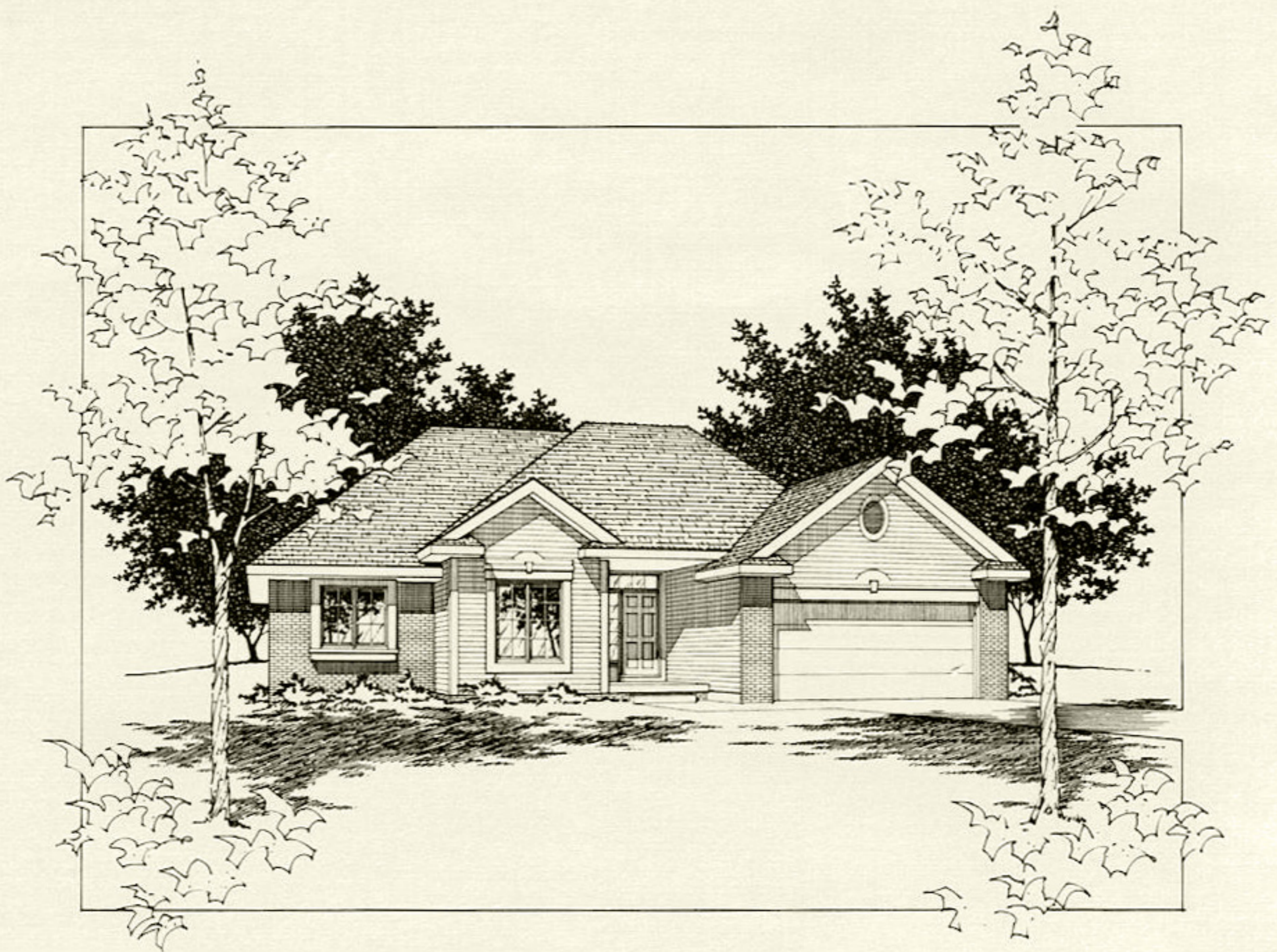
Level 1



Level 2







## Yosemite

3-Bedroom, Ranch • 1,513 Sq. Ft. • Model at Elk Creek Crossing

*This award-winning ranch offers homeowners a formal dining room - almost unheard of in a ranch - and a choice of either a third bedroom or den off the entryway. An exceptional blend of efficiency, flexibility and design innovation...with 9-foot ceilings and well planned "space for living," there's not another ranch like it!*

